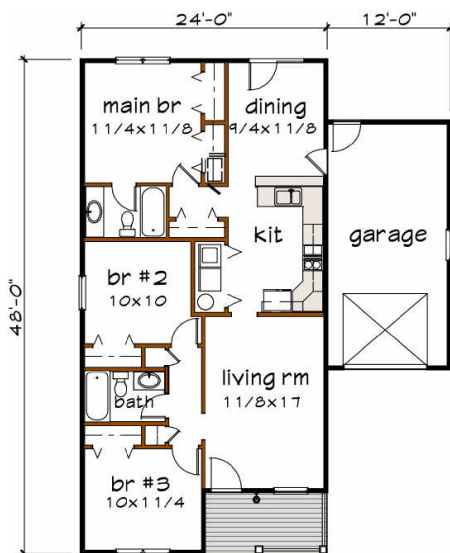
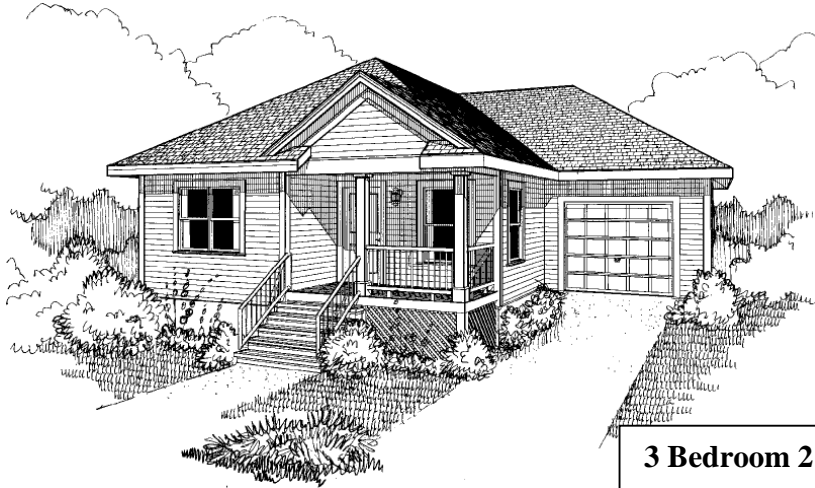


The Eula

An Exuma Homes "Daisy Collection" Residence – Wharton, Texas



3 Bedroom 2 Bath – 1 Car Garage

Living Space 1080 Sq. Ft. Heated
 Front Porch 108 Sq. Ft.
 Garage 240 Sq. Ft.
 Total 1428 Sq. Ft.

\$119,900

Build on Your Lot
 From \$109,900

More Home...Less \$\$

Exuma Home's New Daisy Collection Homes combine such exceptional design and outstanding value, people may wonder how we did it. After all, these Distinctive Homes are full of the features you and your family have always wanted. Open Living and Dining areas with plenty of room for entertaining. Open Kitchens with an abundance of countertop and cabinet space. Innovative designs, offering comfortable living, individualized for your lifestyle, at affordable prices. And at every turn, you'll see features you might not expect. Such as Ceramic Tile Foyers, Oak Laminate Flooring, Leaded – Etched Glass Entry Doors, Granite Style Laminated Countertops, Wood Cabinetry.

Exuma Homes is committed to helping families live up to their expectations, by offering the finest in personalized attention and Customer Service. You can feel confident that when we build the home you've always dreamed of, it will impress the most important people - You and your Family. Experience Exuma Homes New Daisy Collection Homes today, where you get "More Home...(for)...Less \$\$".

Exuma Homes

Steven J. Griffin, Sr.
 617 E. Belle
 Wharton, Texas 77478
 (979) 282-2225

Toll Free 1-866-EXUMA-59

www.exumahomes.com

email: steven@exumaconstruction.com