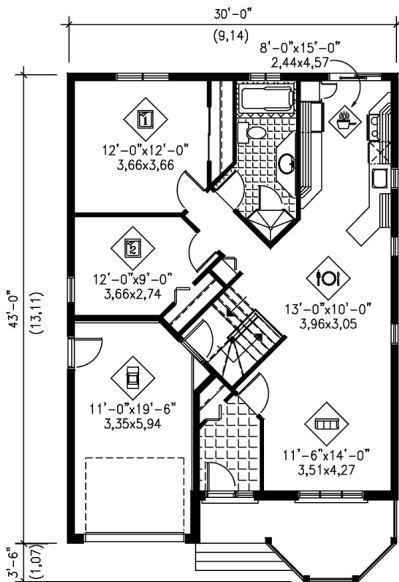


The Susan

An Exuma Homes Residence • Wharton, Texas



Exuma Homes's New Daisy Collection Homes combine such exceptional design and outstanding value, people may wonder how we did it. After all, these Distinctive Homes are full of the features you and your family have always wanted. Open Living and Dining areas with plenty of room for entertaining. Open Kitchens with an abundance of countertop and cabinet space. Innovative designs, offering comfortable living, individualized for your lifestyle, at affordable prices. And at every turn, you'll see features you might not expect. Such as Ceramic Tile Foyers, Oak Laminate Flooring, Leaded – Etched Glass Entry Doors, Granite Style Laminated Countertops, Wood Cabinetry.

2 Bedroom 1 Bath – 1 Car Garage

Living Space 988 Sq. Ft. Heated

Front Porch 75 Sq. Ft.

Garage 214 Sq. Ft.

Total 1277 Sq. Ft.

Built on OUR LOT \$109,500

Built on YOUR LOT \$99,500

More Home...Less \$\$

Exuma Homes is committed to helping families live up to their expectations, by offering the finest in personalized attention and Customer Service. You can feel confident that when we build the home you've always dreamed of, it will impress the most important people - You and your Family. Experience Exuma Homes New Daisy Collection Homes today, where you get "**More Home...(for)...Less \$\$**".

Exuma Homes

Steven J. Griffin, Sr.

617 E. Belle

Wharton, Texas 77488

(979) 282-2225

Toll Free 1-866-EXUMA-59

www.exumahomes.com

email: steven@exumaconstruction.com